



GUIDE PRICE £350,000



Hathaway's are delighted to offer for this smartly presented two bedroom flat in the desirable development of Reliance Way.

The flat is light and airy with an open plan set out.

Included a dining room, modern designer kitchen, spacious living room, two double bedrooms and two large bathrooms one being an en-suite

The property has been completed to a high standard.

This property is offered with one allocated parking space.

Situated near Cowley Road providing exceptional access to the bars, restaurants and other amenities the area has to offer. Excellent access to the City centre and ring road. Oxford train station is also within easy reach and has regular direct trains to London Paddington.

Description

Constructed in 2006 by Berkeley Homes this well appointed contemporary apartment.

The property is currently tenanted until 16th of October 2023, the current rent is £1450.00 PCM

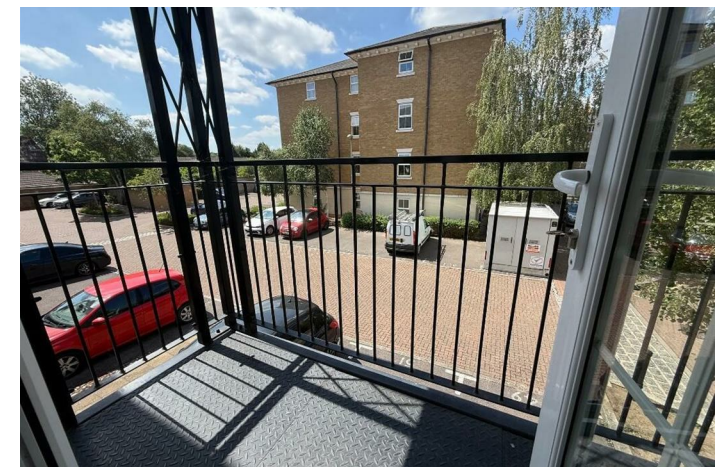
The property has passed its EICR.

Ground rent: Is £100 every 6 months (£200 per annum)

Service charge: £661.15 every 6 months (£1322 per annum).

The term of the lease is 125 years from 1 October 2006.

The property is less than a mile from the business park and just over 1.25 miles from the ring road. There is a regular bus service from the main road to both the city centre and Cowley centre.



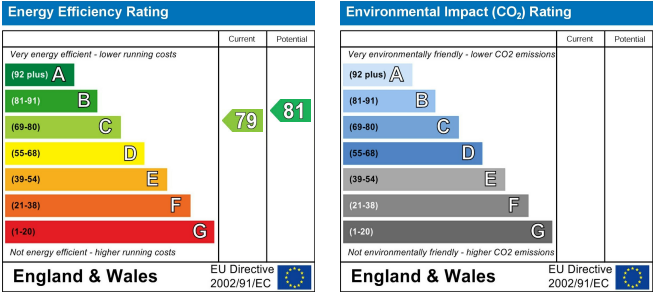
Floor Plans



Area Map



Energy Performance Graph



These particulars, whilst believed to be accurate are set out as a general outline only for guidance and do not constitute any part of an offer or contract. Intending purchasers should not rely on them as statements of representation of fact, but must satisfy themselves by inspection or otherwise as to their accuracy. No person in this firms employment has the authority to make or give any representation or warranty in respect of the property.